

Body/Cabin

Cabin air filter

70-12 320 0000

MCF0482

Notes

Activated Carbon Filter  
Filter Insert  
Piece  
with Odour Absorbent Effect

Height [mm]

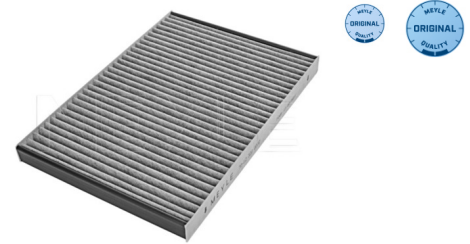
20

Length [mm]

253

Width [mm]

179



References

TESLA 1072736-00-A

TESLA 1072736-00-B

Application info

TESLA Model S (09/12--)

Cabin air filter

70-12 320 0002

MCF0608

Notes

Activated Carbon Filter  
Filter Insert  
with Odour Absorbent Effect

Height [mm]

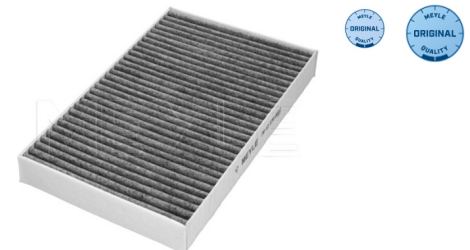
30

Length [mm]

246

Width [mm]

156



References

TESLA 100747900C

TESLA 1035125-00-A

Application info

TESLA Model S (09/12--)

**Cabin air filter**

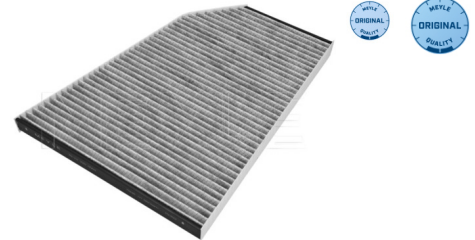
70-12 320 0003

MCF0641

**Notes**

Activated Carbon Filter  
Filter Insert  
with Odour Absorbent Effect

Height [mm] 30  
Length [mm] 321  
Width 1 [mm] 125  
Width [mm] 264



**References**

TESLA 1039042-00-A

TESLA 1039042-00-B

**Application info**

TESLA Model X (09/13--)

**Hood shock**

70-40 910 0000

MHS0104

**Notes**

Force output F [N] 460.00  
Length [mm] 450



**References**

TESLA 6006603

**Application info**

TESLA Model S (09/12--)

**Hood shock**

70-40 910 0003

MHS0105

**Notes**

Force output F [N] 200.00  
 Length [mm] 364.5



**References**

TESLA 109147200B

**Application info**

TESLA Model 3 (01/17--)

**Trunk-/tailgate shock**

70-40 910 0001

MTS0526

**Notes**

Force output F [N] 630.00  
 Length [mm] 696  
 replacement in pairs recommended



**References**

TESLA 6006608

TESLA 6009427

**Application info**

TESLA Model S (09/12--)

**Trunk-/tailgate shock**

70-40 910 0002

MTS0527

**Notes**

both sides  
for vehicles without automatically opening tailgate

Force output F [N]

580.00

Length [mm]

345

replacement in pairs recommended



**References**

TESLA 109156000A

TESLA 109156000B

**Application info**

TESLA Model 3 (01/17--)

## Brakes

## Brake disc

70-83 521 0001/PD

MBD2226PD

## Notes

Front Axle  
High-carbon  
Vented  
Zink flake coated

Bolt Hole Circle Ø [mm]	120
Brake Disc Thickness [mm]	32
Centering Diameter [mm]	70.15
Height [mm]	70.7
Minimum thickness [mm]	30
Number of Holes	5
Outer Diameter [mm]	355
Required quantity	2
Wheel Bolt Bore Ø [mm]	16.6



## References

TESLA 102509900B

TESLA 600642000A

## Application info

TESLA Model S (09/12--)

TESLA Model X (09/13--)

## Brake disc

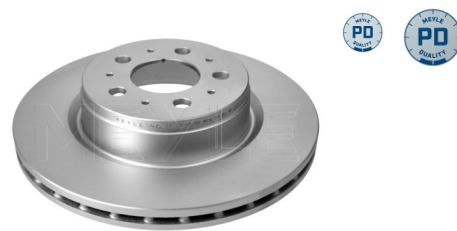
70-83 521 0002/PD

MBD2687PD

## Notes

Coated  
Front Axle  
High-carbon  
Vented

Bolt Hole Circle Ø [mm]	114.3
Brake Disc Thickness [mm]	25
Centering Diameter [mm]	70.15
Height [mm]	68
Minimum thickness [mm]	23
Number of Holes	5
Outer Diameter [mm]	320
Required quantity	2
Wheel Bolt Bore Ø [mm]	16.5



## References

TESLA 1044611-00-D

**Application info**

TESLA Model 3 (01/17--)

**Brake disc**

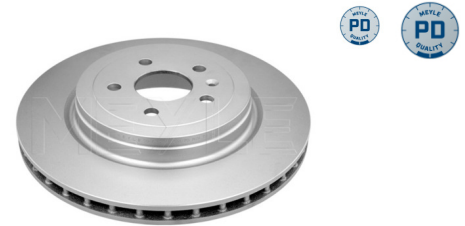
70-83 523 0001/PD

MBD2227PD

**Notes**

High-carbon  
Rear Axle  
Vented  
Zink flake coated

Bolt Hole Circle Ø [mm]	120
Brake Disc Thickness [mm]	28
Centering Diameter [mm]	70.15
Height [mm]	66.3
Minimum thickness [mm]	26
Number of Holes	5
Outer Diameter [mm]	365
Required quantity	2
Wheel Bolt Bore Ø [mm]	16.6



**References**

TESLA 600643100C

TESLA 600643100D

**Application info**

TESLA Model S (09/12--)

**Brake disc**

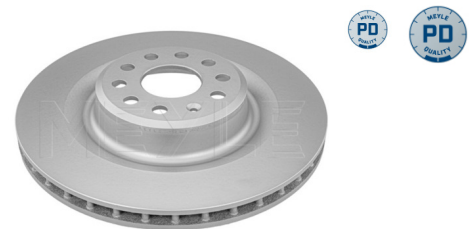
70-83 523 0002/PD

MBD2408PD

**Notes**

High-carbon  
Rear Axle  
Vented  
Zink flake coated

Bolt Hole Circle Ø [mm]	120
Brake Disc Thickness [mm]	28
Centering Diameter [mm]	70.1
Height [mm]	60
Minimum thickness [mm]	26
Number of Holes	5
Outer Diameter [mm]	365
Required quantity	2
Wheel Bolt Bore Ø [mm]	16.6



**References**

TESLA 102763200B

**Application info**

TESLA Model S (09/12--)

TESLA Model X (09/13--)

**Brake pad set**

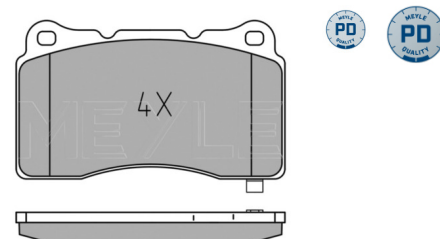
025 233 2516/PD

MBP1778PD

**Notes**

Front Axle  
with acoustic wear warning  
with anti-squeak plate

Brake System BREMBO  
Height [mm] 77.3  
Number of wear indicators [per axle] 4  
Quality PREMIUM  
Thickness [mm] 15.5  
Width [mm] 131.8



**References**

Cadillac 22866931  
FMSI 7953-D1050  
Ford USA DR332001CC  
Ford USA DR3Z2001C  
Honda 45022-TGH-A12  
Mitsubishi MR407376  
TESLA 105506600D  
TESLA 6002453

Cadillac 89047725  
Ford USA 7R3Z2001A  
Ford USA DR3Z2001A  
Honda 45022-TGH-A01  
Hyundai 58101-2MA10  
TESLA 105506600B  
TESLA 106833000C  
WVA 23325

**Application info**

Cadillac ATS (02/13--)  
Honda Civic X (09/15--)  
Mitsubishi Lancer VII (03/00-12/13)  
TESLA Model X (09/13--)

Ford USA Mustang V (12/04--)  
Hyundai Genesis I (01/08--)  
TESLA Model S (09/12--)  
TESLA Roadster (03/08--)

**Brake pad set**

025 246 9616/PD

MBP1922PD

**Notes**

Rear Axle  
with acoustic wear warning

Height [mm] 53  
Quality PREMIUM  
Thickness [mm] 16.5  
Width [mm] 127



**DRIVER'S BEST FRIEND**

**MEYLE**

**References**

TESLA 109741600B  
WVA 26496  
WVA 26498

TESLA 109741600C  
WVA 26497

**Application info**

TESLA Model S (09/12--)

TESLA Model X (09/13--)

**Brake pad set**

**025 257 4315/PD**

**MBP1780PD**

**Notes**

Rear Axle  
with acoustic wear warning  
with anti-squeak plate



Brake System BREMBO  
Height [mm] 69.1  
Number of wear indicators [per axle] 2  
Quality PREMIUM  
Thickness [mm] 15.3  
Width [mm] 109.7

**References**

Chrysler 68144223AA  
Jeep 68144432AA  
Jeep 68399102AB  
TESLA 106833100B  
TESLA 6002446  
WVA 25744

Hyundai 58302-2MA10  
Jeep 68399102AA  
TESLA 105506800B  
TESLA 106833100C  
WVA 25743

**Application info**

Chrysler 300 C (II) (09/10--)  
Jeep Grand Cherokee IV (WK) (06/10--)  
TESLA Model X (09/13--)

Hyundai Genesis I (01/08--)  
TESLA Model S (09/12--)  
TESLA Roadster (03/08--)



Electrics

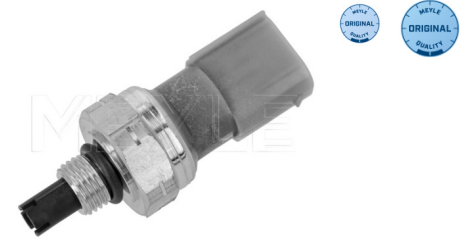
Switch, A/C fan

70-14 823 0000

MEX1303

Notes

oval  
with shaft seal  
Number of pins 4  
Thread Size M12x1.25



References

TESLA 1008515 TESLA 1008515-00-A  
TESLA 1008515-00-B TESLA 1008515-00-C

Application info

TESLA Model S (09/12--) TESLA Model X (09/13--)

Switch, A/C fan

70-14 823 0001

MEX1304

Notes

oval  
with shaft seal  
Number of pins 4  
Thread Size M12x1.25



References

TESLA 1108611 TESLA 1108611-00-A  
TESLA 1108611-00-B

Application info

TESLA Model 3 (01/17--)

## Steering

## Axial rod

70-16 031 0000

MAR0654

## Notes

Front Axle Left  
Front Axle Right

Length [mm] 242  
Thread Size 1 M16x1,5  
Thread Size 2 M14x1,5  
replacement in pairs recommended



## References

TESLA 1044831-00-F  
TESLA 1044831-99-E

TESLA 1044831-00-H  
TESLA 1044841-00-E

## Application info

TESLA Model 3 (01/17--)

TESLA Model Y (03/19--)

## Tie rod end

70-16 020 0000

MTE0955

## Notes

Front Axle Left  
Front Axle Right

Length [mm] 132  
Thread Size 1 M14x2,0  
Thread Size 2 M18X1,5  
replacement in pairs recommended



## References

TESLA 6007071-00-A

TESLA 6007071-00-B

## Application info

TESLA Model S (09/12--)

















**Mount, control arm**

70-14 610 0006/HD

MCB0575HD

**Notes**

Carbon neutral  
 Front Axle Left  
 Front Axle Right  
 Steel Elastomer  
 Upper  
 for control arm  
 inner  
 without holder



Height [mm] 50  
 Inner Diameter [mm] 56  
 Outer Diameter [mm] 45  
 Quantity per axle 4  
 Replace in pairs only  
 Required quantity reinforced version 2

**References**

TESLA 1044321-00-F	TESLA 1044321-00-G
TESLA 1044321-00-H	TESLA 1044321-00-J
TESLA 1044326-00-F	TESLA 1044326-00-G
TESLA 1044326-00-H	TESLA 1044326-00-J

**Application info**

TESLA Model 3 (01/17--)	TESLA Model Y (03/19--)
-------------------------	-------------------------

**Stabilizer link**

70-16 060 0000/HD

MSL1183HD

**Notes**

Carbon neutral  
 Coupling Rod  
 Front Axle Left  
 Front Axle Right



Length [mm] 269.5  
 Thread Size 1 M10X1,5  
 Thread Size 2 M10X1,5  
 reinforced version  
 replacement in pairs recommended

**References**

TESLA 1027391-00-B

**Application info**

TESLA Model X (09/13--)

**Stabilizer link**

70-16 060 0001

MSL1111

**Notes**

Coupling Rod  
Rear Axle Left  
Rear Axle Right

Length [mm] 175  
Pipe Ø [mm] 8  
Thread Size 1 M10x1,25  
Thread Size 2 M10x1,25  
replacement in pairs recommended



**References**

TESLA 6007100-00-A

**Application info**

TESLA Model S (09/12--)

**Stabilizer link**

70-16 060 0002/HD

MSL1186HD

**Notes**

Carbon neutral  
Coupling Rod  
Rear Axle Left  
Rear Axle Right

Length [mm] 140.8  
Pipe Ø [mm] 10  
Thread Size 1 M10x1,5  
Thread Size 2 M10x1,5  
replacement in pairs recommended







**References**

TESLA 1027491-00-A



**Application info**

TESLA Model X (09/13--)

Stabilizer link		70-16 060 0004	MSL1112
<p><b>Notes</b></p> <p>Coupling Rod Front Axle Right</p> <p>Length [mm] 202</p> <p>Paired article number 70-16 060 0007   MSL1113</p> <p>Thread Size 1 M10x1,25</p> <p>Thread Size 2 M10X1,25</p> <p>replacement in pairs recommended</p>			
<p><b>References</b></p> <p>TESLA 6008915-00-A</p>			
<p><b>Application info</b></p> <p>TESLA Model S (09/12--)</p>			
Stabilizer link		70-16 060 0005/HD	MSL1177HD
<p><b>Notes</b></p> <p>Carbon neutral Coupling Rod Front Axle Left Front Axle Right</p> <p>Length [mm] 229</p> <p>Thread Size 1 M10 X 1,5</p> <p>Thread Size 2 M10 X 1,5</p> <p>reinforced version</p> <p>replacement in pairs recommended</p>			
<p><b>References</b></p> <p>TESLA 1030603-00-B</p>			
<p><b>Application info</b></p> <p>TESLA Model S (09/12--)</p>			

Stabilizer link		70-16 060 0007	MSL1113
<p><b>Notes</b></p> <p>Coupling Rod Front Axle Left</p> <p>Length [mm] 202</p> <p>Paired article number 70-16 060 0004   MSL1112</p> <p>Thread Size 1 M10x1,25</p> <p>Thread Size 2 M10x1,25</p> <p>replacement in pairs recommended</p>			
<p><b>References</b></p> <p>TESLA 6007098-00-A</p>			
<p><b>Application info</b></p> <p>TESLA Model S (09/12--)</p>			
Stabilizer link		70-16 060 0008/HD	MSL1115HD
<p><b>Notes</b></p> <p>Carbon neutral Coupling Rod Front Axle Left</p> <p>Length [mm] 281</p> <p>Paired article number 70-16 060 0009/HD   MSL1116HD</p> <p>Thread Size 1 M12x1,5</p> <p>Thread Size 2 M12x1,5</p> <p>reinforced version</p> <p>replacement in pairs recommended</p>			
<p><b>References</b></p> <p>TESLA 1044391-00-D</p> <p>TESLA 1188391-00-B</p>			
<p><b>Application info</b></p> <p>TESLA Model 3 (01/17--)</p> <p>TESLA Model Y (03/19--)</p>			



Stabilizer link		70-16 060 0011/HD	MSL1148HD
<p><b>Notes</b></p> <p>Carbon neutral Coupling Rod Rear Axle Right</p> <p>Length [mm] 144</p> <p>Paired article number 70-16 060 0010/HD   MSL1147HD</p> <p>Thread Size 1 M10X1,25</p> <p>Thread Size 2 M10X1,25</p> <p>reinforced version</p> <p>replacement in pairs recommended</p>			
<p><b>References</b></p> <p>TESLA 1044496-00-E</p> <p>TESLA 1288496-00-A</p>		<p>TESLA 1044496-00-F</p>	
<p><b>Application info</b></p> <p>TESLA Model 3 (01/17--)</p> <p>TESLA Model Y (03/19--)</p>		<p>TESLA Model X (09/13--)</p>	
Strut mount		70-14 741 0003	MSM0333
<p><b>Notes</b></p> <p>Piece</p> <p>Rear Axle both sides</p> <p>Rubber-Metal Mount without ball bearing</p> <p>Required quantity 2</p> <p>replacement in pairs recommended</p>			
<p><b>References</b></p> <p>TESLA 1044463-00-E</p>			
<p><b>Application info</b></p> <p>TESLA Model 3 (01/17--)</p>			

## Wheel hub

70-14 752 0000

MWH0319

## Notes

Ball Bearing  
 Left  
 Right  
 with integrated magnetic sensor ring  
 with integrated wheel bearing

Bolt Hole Circle Ø [mm] 120  
 Number of Teeth 30  
 Number of Teeth, ABS ring 96  
 Outer Diameter [mm] 160.3  
 Rim Hole Number 5  
 Thread Size M14x1,5



## References

TESLA 1027121-00-A  
 TESLA 1027170-00-B

TESLA 1027170-00-A

## Application info

TESLA Model S (09/12--)

TESLA Model X (09/13--)