



MEYLE No. 300 333 2104/HD
Reference No. 33 32 6 770 786

Subframe mount, axle carrier to fit BMW E36, E46



as OE



Problem

Premature wear causing excessive free play in the rear trailing arm bushings

Effect

- Comprised rear suspension control and responsiveness
- Loss of driving comfort and safety



Solution



- Use of a radial expansion bushing with a slotted outer sleeve comparable in performance to the BMW sports version
- Higher bushing pre-load

Advantage

Firm and positive rear suspension response and a longer expected service life

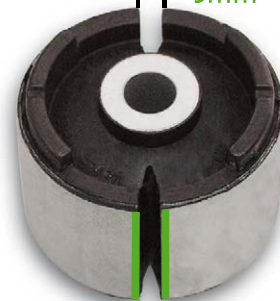
as OE

2mm



MEYLE version

5mm



MEYLE - Miles in Motion

© MEYLE Products® - Wulf Gaertner Autoparts AG • Lo8.2006
Merkurring 111 • 22143 Hamburg • Germany
contact@meyle.com • www.meyle.com